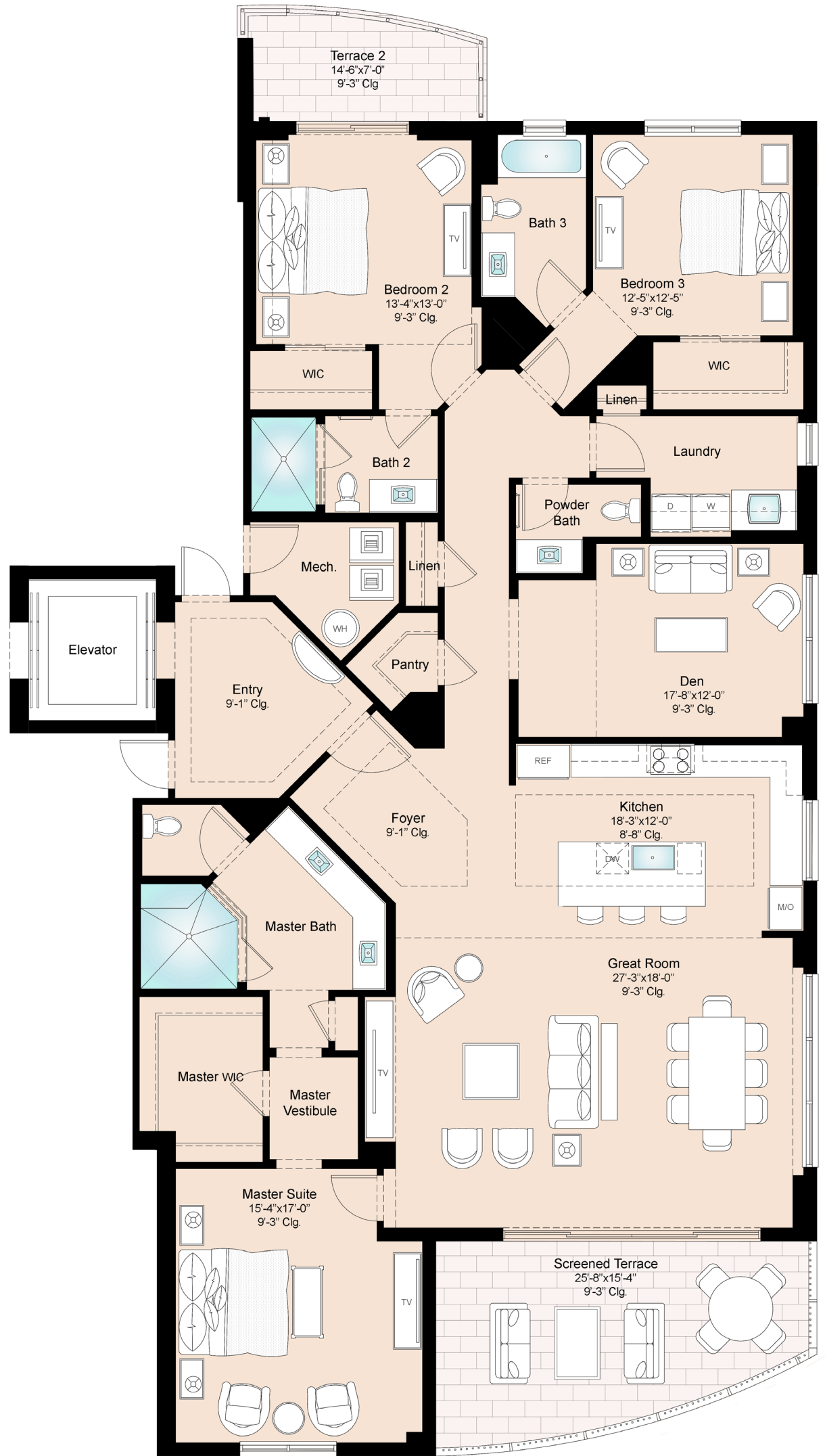


GRANDVIEW

AT BAY BEACH



RESIDENCE 01

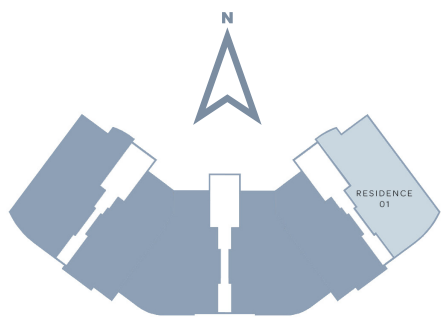
3 BEDROOMS PLUS DEN

3.5 BATHROOMS

LIVING AREA: 2,923 SQ FT

TERRACES: 363 SQ FT

TOTAL RESIDENCE: 3,286 SQ FT



The above drawings are conceptual only and are subject to change without notice at the discretion of the developer. The dimensions set forth in this sales brochure are measured to the exterior boundaries of the exterior walls and the centerline of interior demising walls and vary from the dimensions set forth in the declaration, which is measured to include only interior space. The total condominium unit square footages shown in the declaration are less than the square footages shown in this sales brochure.

A Project by
LONDON BAY
DEVELOPMENT GROUP

ORAL REPRESENTATIONS CANNOT BE RELIED UPON AS CORRECTLY STATING REPRESENTATIONS OF THE DEVELOPER. FOR CORRECT REPRESENTATIONS, MAKE REFERENCE TO THIS BROCHURE AND TO THE DOCUMENTS REQUIRED BY SECTION 718.503, FLORIDA STATUTES, TO BE FURNISHED BY A DEVELOPER TO A BUYER OR LESSEE.

